

Distortion Rate For Pre Print  
Plates For .107 Is 97.04%

Distortion Rate For Tail Print  
Plates For .067 Is 98.20%



DESIGN GROUP:  
Shopper Series

Ultra Modular Mart  
13 x 7 x 16 1/2

CREATED BY: B. Walkrawe  
TECHNICAL:  
Starting Web: 41 1/4" Finished Web 41.00"

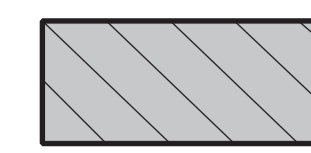
DATE: 2/10/16 SCALE: FULL

**PLEASE NOTE:** This proof is for copy, content, and position approval only. This proof is not for actual color or paper substrate used to produce your order. Carefully check all traps (overlap of color) punctuation, spelling, copy and elements. Please use attached approval letter for signed approval. Approval letter, proof and ink roll outs must be returned to produce your order.

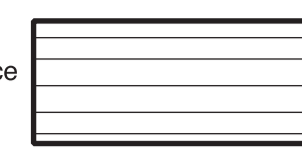
**BORDER DESIGNS**  
Because Of Machine Movement In Bag Conversion, Copy Should Be Placed At Least 1/4" From Fold Lines Or Edges. In The Top Area, Use 1/2" Bleed. Border Designs Should Be Kept 1/2" From Fold Edges, Top Cutoff And Bottom Fold.

Fill All 5 Anti-Bounce Area With 40% Screen In All Colors Containing Screens

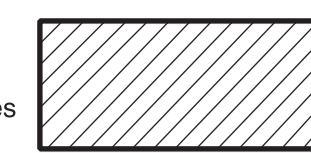
Full Panel Print Must Bleed Into Top & Bottom Of Bag, Which Is Indicated On Template



Anti-Bounce Strips



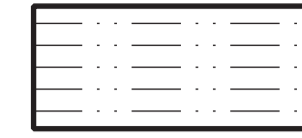
Fold And Paste Lines



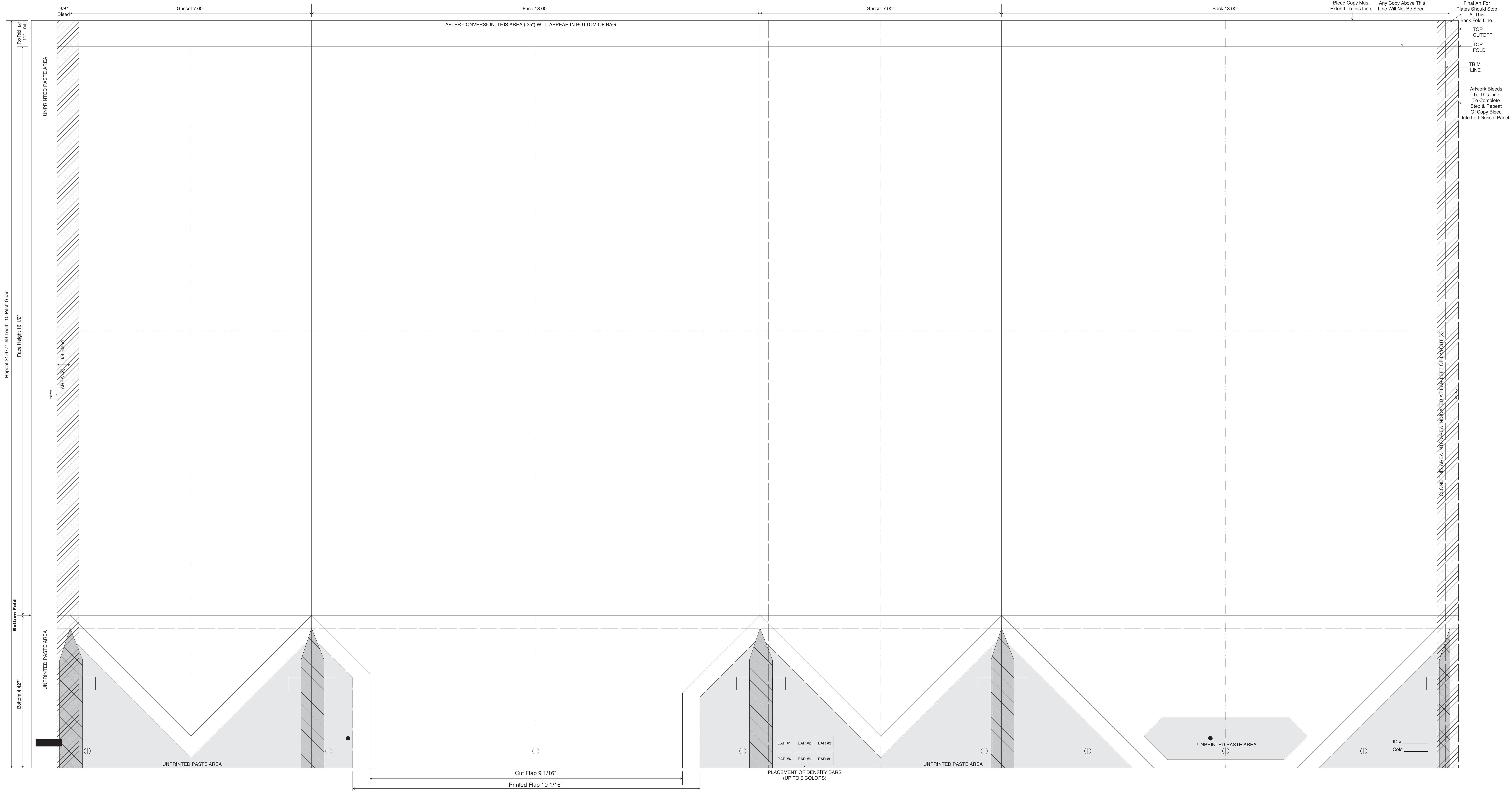
Clone Areas



Bleed Lines



Center Lines



Repeat 21, 677, 69 Tooth, 10 Pitch Gear  
Floor Height 16 1/2"

Bottom Fold  
Bottom 4.427"

AFTER CONVERSION, THIS AREA (.25") WILL APPEAR IN BOTTOM OF BAG

Bleed Copy Must Extend To This Line.  
Any Copy Above This Line Will Not Be Seen.

Final Art For Plates Should Stop At This Back Fold Line.  
TOP CUTOFF  
TOP FOLD  
TRIM LINE  
Artwork Bleeds To This Line To Complete Step & Repeat Of Copy Bleed Into Left Gusset Panel.

CLONE THIS AREA INTO AREA INDICATED AT FAR LEFT OF LAYOUT

BAR #1 BAR #2 BAR #3  
BAR #4 BAR #5 BAR #6  
PLACEMENT OF DENSITY BARS  
(UP TO 6 COLORS)

Cut Flap 9 1/16"  
Printed Flap 10 1/16"

ID # \_\_\_\_\_  
Color \_\_\_\_\_