

Distortion Rate For Pre Print
Plates For .107 Is 97.24%

Distortion Rate For Tail Print
Plates For .067 Is 98.32%



DESIGN GROUP:
Shopper Series

Macrame Mart
13 x 7 x 17

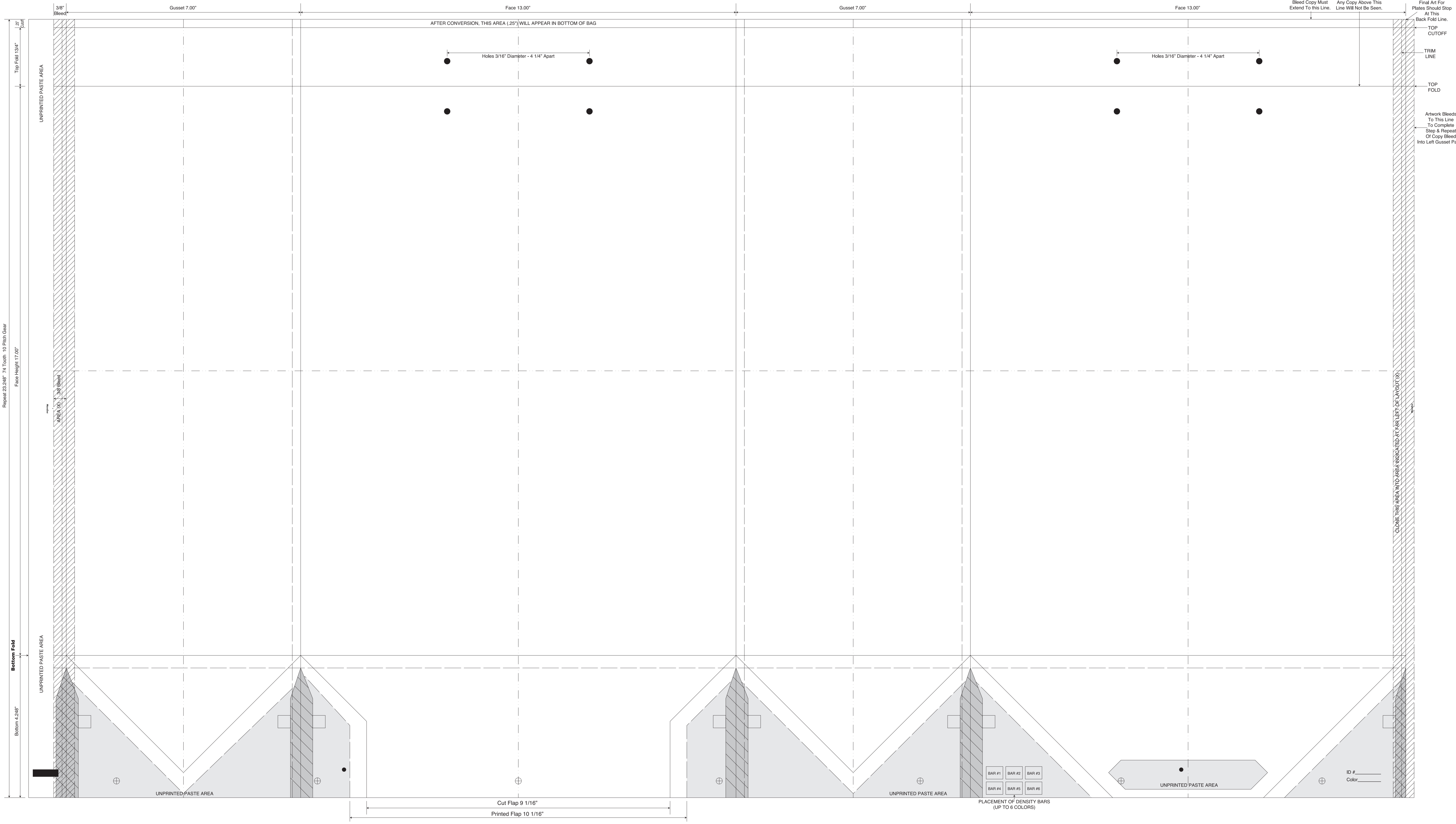
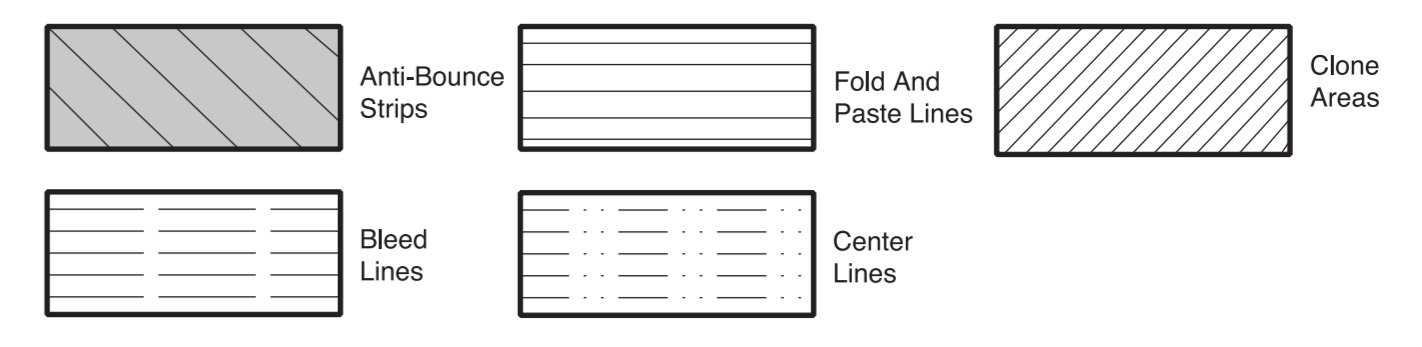
DATE: 2/10/16 SCALE: FULL

PLEASE NOTE: This proof is for copy, content, and position approval only. This proof is not for actual color or paper substrate used to produce your order. Carefully check all traps (overlap of color) punctuation, spelling, copy and elements. Please use attached approval letter for signed approval. Approval letter, proof and ink roll outs must be returned to produce your order.

BORDER DESIGNS
Because Of Machine Movement In Bag Conversion, Copy Should Be Placed At Least 1/4" From Fold Lines Or Edges. In The Top Area, Use 1/2" Bleed. Border Designs Should Be Kept 1/2" From Fold Edges, Top Cutoff And Bottom Fold.

Full Panel Print Must Bleed Into Top & Bottom Of Bag, Which Is Indicated On Template

Fill All 5 Anti-Bounce Area With 40% Screen In All Colors Containing Screens



Repeat 23.248" 74 Tooth 10 Pitch Gear
Face Height 17.00"

Bottom Fold
Bottom 4.248"

Final Art For Plates Should Stop At This Back Fold Line.
TOP CUTOFF
TRIM LINE
TOP FOLD
Artwork Bleeds To This Line To Complete Step & Repeat Or Copy Bleed Into Left Gusset Panel.
CLONE THIS AREA INTO AREA INDICATED AT FAR LEFT OF INBOARD

Bleed Copy Must Extend To This Line.
Any Copy Above This Line Will Not Be Seen.

AFTER CONVERSION, THIS AREA (.25") WILL APPEAR IN BOTTOM OF BAG

Holes 3/16" Diameter - 4 1/4" Apart

Holes 3/16" Diameter - 4 1/4" Apart

Cut Flap 9 1/16"
Printed Flap 10 1/16"

PLACEMENT OF DENSITY BARS
(UP TO 6 COLORS)