

Distortion Rate For Pre Print Plates For .107 Is 96.99%

Distortion Rate For Tail Print Plates For .067 Is 98.17%



A NOVOLEX BRAND  
1 Duro Way  
Walton, KY 41094  
Duro.ArtDepartment@novolex.com

CREATED BY: B. Wallrawe  
TECHNICAL:  
Starting Web: 00.00" Finished Web 00.00"



A NOVOLEX BRAND  
1 Duro Way  
Walton, KY 41094  
Duro.ArtDepartment@novolex.com

CREATED BY: B. Wallrawe

TECHNICAL:  
Starting Web: 45 1/4" Finished Web 45.00"

DESIGN GROUP:  
Shopper Series

Macrame Debonair  
16 x 6 x 15 3/4

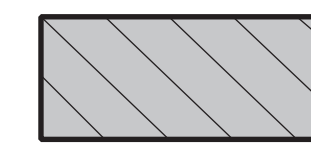
DATE: 2/10/16 SCALE: FULL

**PLEASE NOTE:** This proof is for copy, content, and position approval only. This proof is not for actual color or paper substrate used to produce your order. Carefully check all traps (overlap of color) punctuation, spelling, copy and elements. Please use attached approval letter for signed approval. Approval letter, proof and ink roll outs must be returned to produce your order.

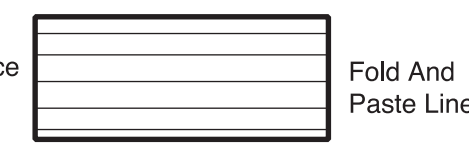
**BORDER DESIGNS**  
Because Of Machine Movement In Bag Conversion, Copy Should Be Placed At Least 1/4" From Fold Lines Or Edges. In The Top Area, Use 1/2" Bleed. Border Designs Should Be Kept 1/2" From Fold Edges, Top Cutoff And Bottom Fold.

Full Panel Print Must Bleed Into Top & Bottom Of Bag, Which Is Indicated On Template

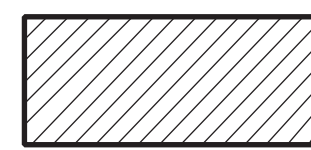
Fill All 5 Anti-Bounce Area With 40% Screen In All Colors Containing Screens



Anti-Bounce Stripe



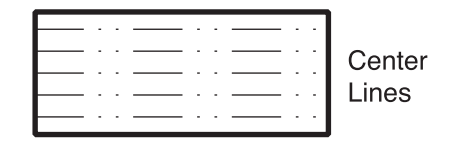
Fold And Paste Lines



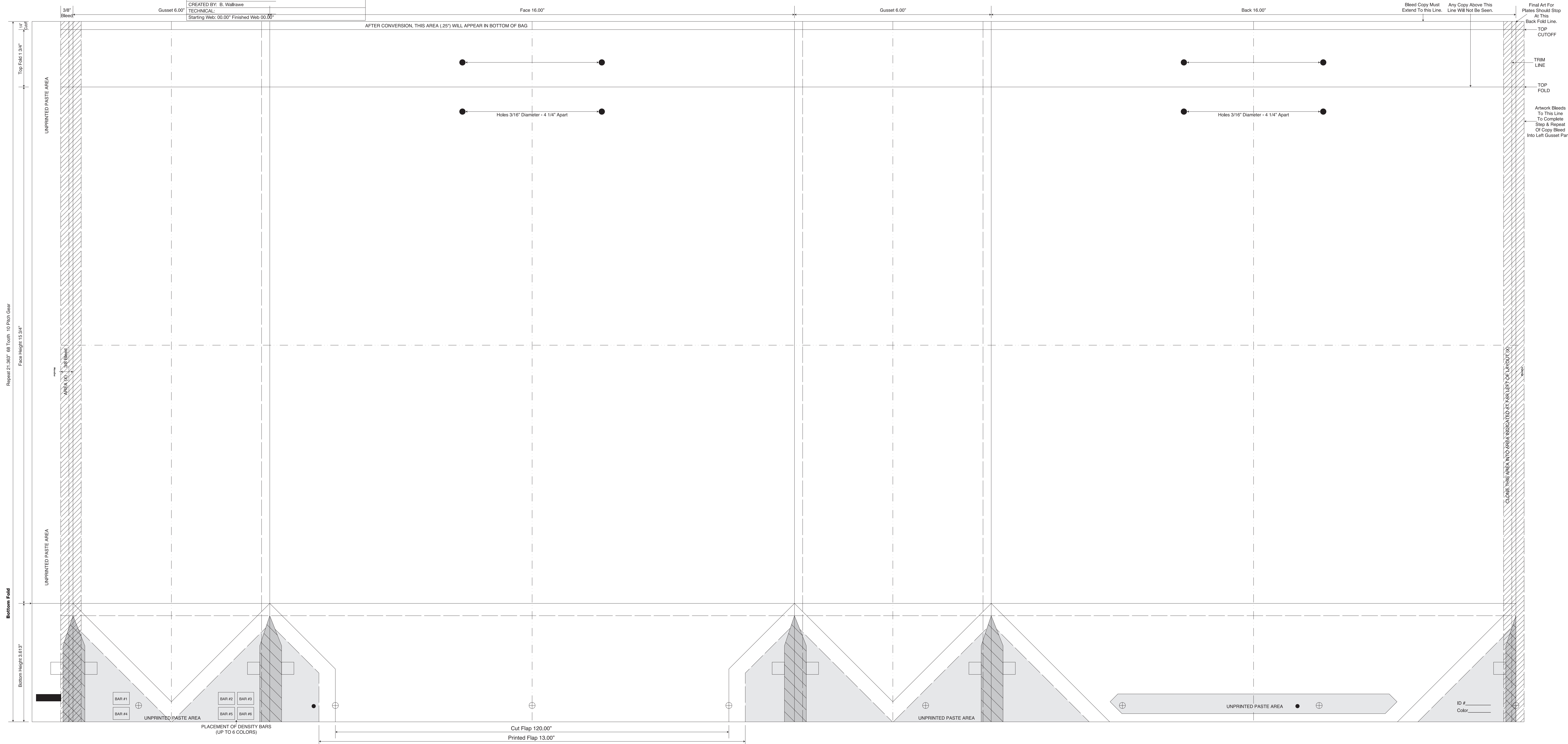
Clone Areas



Bleed Lines



Center Lines



Repeat 21.982" 68 Teeth 10 Pitch Gear  
Face Height 15.934"

Bottom Fold  
Bottom Height 13.613"

1/4" Cutoff  
Top Fold 1.314"

1/4" Cutoff  
Face Height 15.934"

Bottom Height 13.613"

AFTER CONVERSION, THIS AREA (.25") WILL APPEAR IN BOTTOM OF BAG

Holes 3/16" Diameter - 4 1/4" Apart

Holes 3/16" Diameter - 4 1/4" Apart

Bleed Copy Must Extend To This Line. Any Copy Above This Line Will Not Be Seen.

Final Art For Plates Should Stop At This Back Fold Line.  
TOP CUTOFF  
TRIM LINE  
TOP FOLD  
Artwork Bleeds To This Line To Complete Step & Repeat Of Copy Bleed Into Left Gusset Panel.

CLONE THIS AREA INTO AREA INDICATED AT FAR LEFT OF LAYOUT (X)

PLACEMENT OF DENSITY BARS (UP TO 6 COLORS)

Cut Flap 120.00"  
Printed Flap 13.00"

UNPRINTED PASTE AREA

ID # \_\_\_\_\_  
Color \_\_\_\_\_